

**SCREENING REPORT FOR AN ENVIRONMENTAL AUTHORIZATION AS
REQUIRED BY THE 2014 EIA REGULATIONS – PROPOSED SITE
ENVIRONMENTAL SENSITIVITY**

EIA Reference number: TBC

Project name: Portion 250 of Farm 745, Goedgeloof, St Francis Bay, Eastern Cape


Project title: The proposed new warehouse and storage facility

Date screening report generated: 03/09/2025 12:03:17

Applicant: Goedgeloof Properties (Pty) Ltd

Compiler: Eco Route Environmental Consultancy

Compiler signature:



.....

Application Category: Transformation of land | Indigenous vegetation

Table of Contents

Proposed Project Location	3
Orientation map 1: General location	3
Map of proposed site and relevant area(s)	4
Cadastral details of the proposed site	4
Wind and Solar developments with an approved Environmental Authorisation or applications under consideration within 30 km of the proposed area	4
Environmental Management Frameworks relevant to the application	5
Environmental screening results and assessment outcomes	5
Relevant development incentives, restrictions, exclusions or prohibitions	5
Proposed Development Area Environmental Sensitivity	5
Specialist assessments identified	6
Results of the environmental sensitivity of the proposed area	7
MAP OF RELATIVE AGRICULTURE THEME SENSITIVITY	7
MAP OF RELATIVE ANIMAL SPECIES THEME SENSITIVITY	8
MAP OF RELATIVE AQUATIC BIODIVERSITY THEME SENSITIVITY	9
MAP OF RELATIVE ARCHAEOLOGICAL AND CULTURAL HERITAGE THEME SENSITIVITY	10
MAP OF RELATIVE CIVIL AVIATION THEME SENSITIVITY	11
MAP OF RELATIVE DEFENCE THEME SENSITIVITY	12
MAP OF RELATIVE PALEONTOLOGY THEME SENSITIVITY	13
MAP OF RELATIVE PLANT SPECIES THEME SENSITIVITY	14
MAP OF RELATIVE TERRESTRIAL BIODIVERSITY THEME SENSITIVITY	15

Proposed Project Location

Orientation map 1: General location

General Orientation: Portion 250 of Farm 745, Goedgeloof, St Francis Bay, Eastern Cape



Map of proposed site and relevant area(s)



Cadastral details of the proposed site

Property details:

No	Farm Name	Farm/ Erf No	Portion	Latitude	Longitude	Property Type
1	GOED GELOOF	745	0	34°10'13.61S	24°49'16.2E	Farm
2	GOED GELOOF	745	102	34°10'14.67S	24°49'9.99E	Farm Portion
3	GOED GELOOF	745	180	34°10'12.1S	24°49'15.79E	Farm Portion
4	GOED GELOOF	745	172	34°10'20.81S	24°49'8.17E	Farm Portion
5	GOED GELOOF	745	248	34°10'9.73S	24°49'9.88E	Farm Portion
6	GOED GELOOF	745	250	34°10'17.54S	24°49'13.45E	Farm Portion
7	GOED GELOOF	745	249	34°10'15.37S	24°49'21.03E	Farm Portion

Development footprint¹ vertices:

No development footprint(s) specified.

Wind and Solar developments with an approved Environmental Authorisation or applications under consideration within 30 km of the proposed area

No	EIA Reference No	Classification	Status of application	Distance from proposed area (km)
1	12/12/20/1752	Wind	Approved	29

¹ "development footprint", means the area within the site on which the development will take place and includes all ancillary developments for example roads, power lines, boundary walls, paving etc. which require vegetation clearance or which will be disturbed and for which the application has been submitted.

2	12/12/20/1585	Wind	Approved	16.4
3	12/12/20/1861/AM1	Wind	Approved	26.7
4	12/12/20/1585/A5	Wind	Approved	16.4
5	14/12/16/3/3/2/1104	Wind	Approved	17.2
6	14/12/16/3/3/2/1103	Wind	Approved	27.8
7	14/12/16/3/3/2/1104/AM1	Wind	Approved	17.2
8	14/12/16/3/3/2/1102	Wind	Approved	27.6
9	14/12/16/3/3/1/2566	Solar PV	Approved	22.3
10	12/12/20/2289/AM2	Wind	Approved	10.8
11	12/12/20/1718	Wind	Approved	15.1
12	14/12/16/3/3/1/2567	Wind	Approved	29.5
13	12/12/20/1756/2	Wind	Approved	26.9
14	12/12/20/1585/AM7	Wind	Approved	16.4
15	12/12/20/1756	Wind	Approved	4.2
16	12/12/20/1861	Wind	Approved	26.7
17	12/12/20/2209	Wind	Approved	27.5
18	12/12/20/1756/1	Wind	Approved	6.5
19	14/12/16/3/3/2/1102/AM1	Wind	Approved	27.5
20	12/12/20/2289	Wind	Approved	10.8
21	12/12/20/1756/1/AM4	Wind	Approved	6.5
22	12/12/20/1585/AM6	Wind	Approved	16.4

Environmental Management Frameworks relevant to the application

No intersections with EMF areas found.

Environmental screening results and assessment outcomes

The following sections contain a summary of any development incentives, restrictions, exclusions or prohibitions that apply to the proposed development site as well as the most environmental sensitive features on the site based on the site sensitivity screening results for the application classification that was selected. The application classification selected for this report is:

Transformation of land | Indigenous vegetation.

Relevant development incentives, restrictions, exclusions or prohibitions

The following development incentives, restrictions, exclusions or prohibitions and their implications that apply to this site are indicated below.

Incentive, restriction or prohibition	Implication
South African Conservation Areas	https://screening.environment.gov.za/ScreeningDownloads/DevelopmentZones/SACAD_OR_2025_Q1_Metadata.pdf

Proposed Development Area Environmental Sensitivity

The following summary of the development site environmental sensitivities is identified. Only the highest environmental sensitivity is indicated. The footprint environmental sensitivities for the proposed development footprint as identified, are indicative only and must be verified on site by a suitably qualified person before the specialist assessments identified below can be confirmed.

Theme	Very High sensitivity	High sensitivity	Medium sensitivity	Low sensitivity
Agriculture Theme	X			
Animal Species Theme		X		
Aquatic Biodiversity Theme	X			
Archaeological and Cultural Heritage Theme				X
Civil Aviation Theme		X		
Defence Theme				X
Paleontology Theme	X			
Plant Species Theme			X	
Terrestrial Biodiversity Theme	X			

Specialist assessments identified

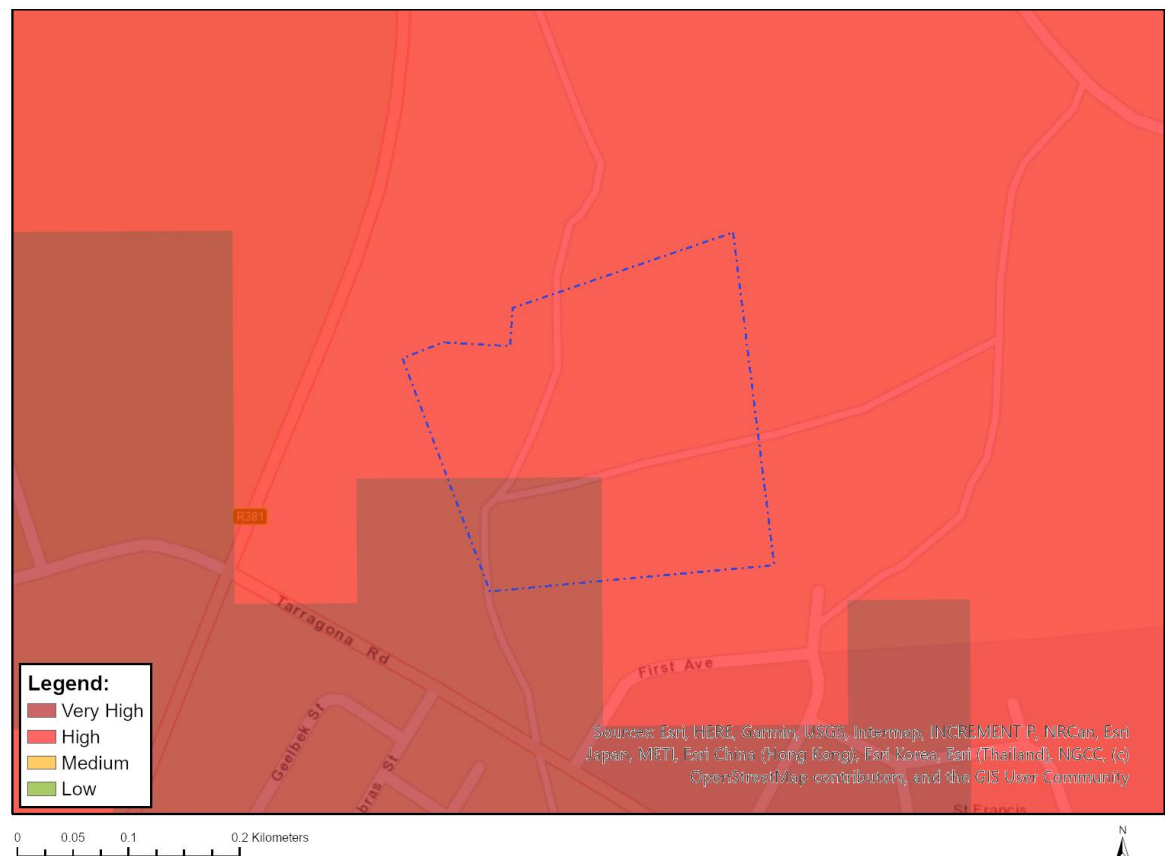
Based on the selected classification, and the known impacts associated with the proposed development, the following list of specialist assessments have been identified for inclusion in the assessment report. It is the responsibility of the EAP to confirm this list and to motivate in the assessment report, the reason for not including any of the identified specialist study including the provision of photographic evidence of the site situation.

No	Specialist assessment	Assessment Protocol
1	Landscape/Visual Impact Assessment	https://screening.environment.gov.za/ScreeningDownloads/AssessmentProtocols/Gazetted_General_Requirement_Assessment_Protocols.pdf
2	Archaeological and Cultural Heritage Impact Assessment	https://screening.environment.gov.za/ScreeningDownloads/AssessmentProtocols/GuidanceforHIA.pdf
3	Palaeontology Impact Assessment	https://screening.environment.gov.za/ScreeningDownloads/AssessmentProtocols/GuidanceforPIA.pdf
4	Terrestrial Biodiversity Impact Assessment	https://screening.environment.gov.za/ScreeningDownloads/AssessmentProtocols/Gazetted_Terrestrial_Biodiversity_Assessment_Protocols.pdf
5	Aquatic Biodiversity Impact Assessment	https://screening.environment.gov.za/ScreeningDownloads/AssessmentProtocols/Gazetted_Aquatic_Biodiversity_Assessment_Protocols.pdf
6	Socio-Economic Assessment	https://screening.environment.gov.za/ScreeningDownloads/AssessmentProtocols/Gazetted_General_Requirement_Assessment_Protocols.pdf
7	Plant Species Assessment	https://screening.environment.gov.za/ScreeningDownloads/AssessmentProtocols/Gazetted_Plant_Species_Assessment_Protocols.pdf
8	Animal Species Assessment	https://screening.environment.gov.za/ScreeningDownloads/AssessmentProtocols/Gazetted_Animal_Species_Assessment_Protocols.pdf

Results of the environmental sensitivity of the proposed area.

The following section represents the results of the screening for environmental sensitivity of the proposed site for relevant environmental themes associated with the project classification. It is the duty of the EAP to ensure that the environmental themes provided by the screening tool are comprehensive and complete for the project. Refer to the disclaimer.

MAP OF RELATIVE AGRICULTURE THEME SENSITIVITY

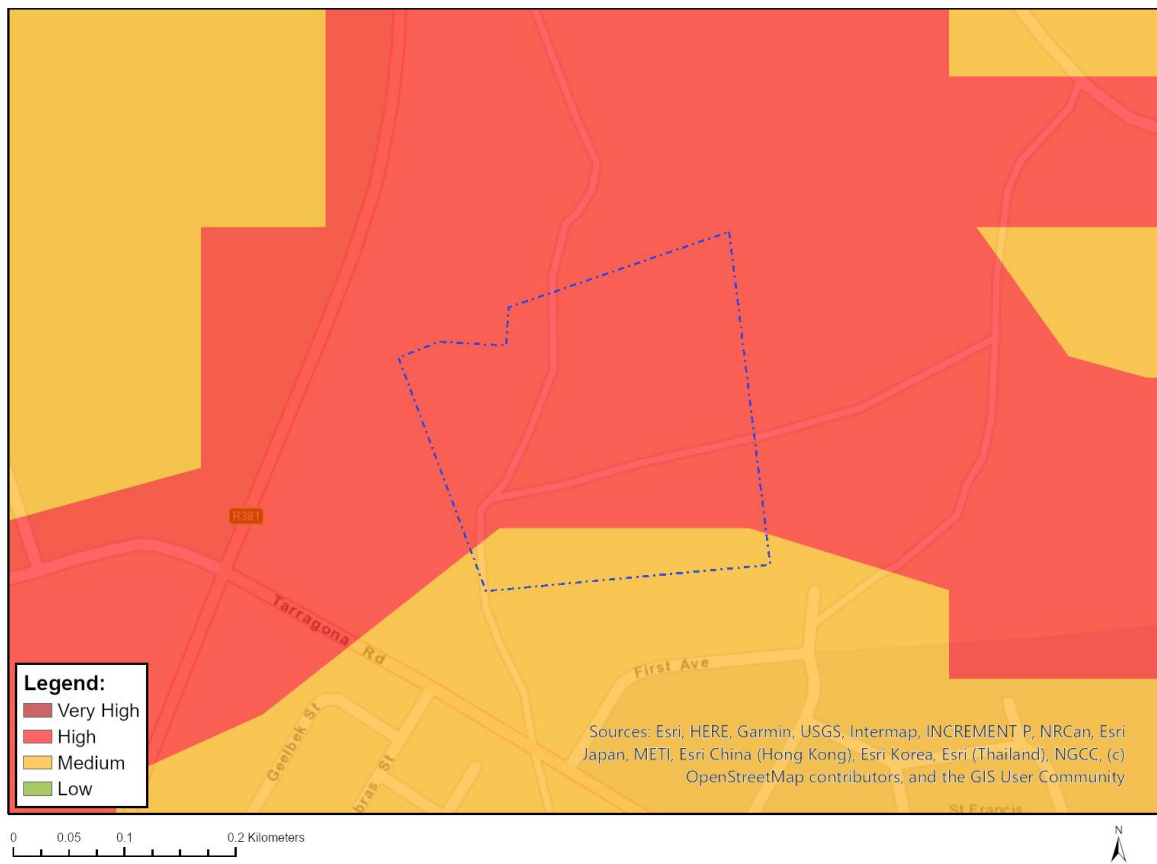


Very High sensitivity	High sensitivity	Medium sensitivity	Low sensitivity
X			

Sensitivity Features:

Sensitivity	Feature(s)
High	10. Moderate-High
Very High	11. High

MAP OF RELATIVE ANIMAL SPECIES THEME SENSITIVITY



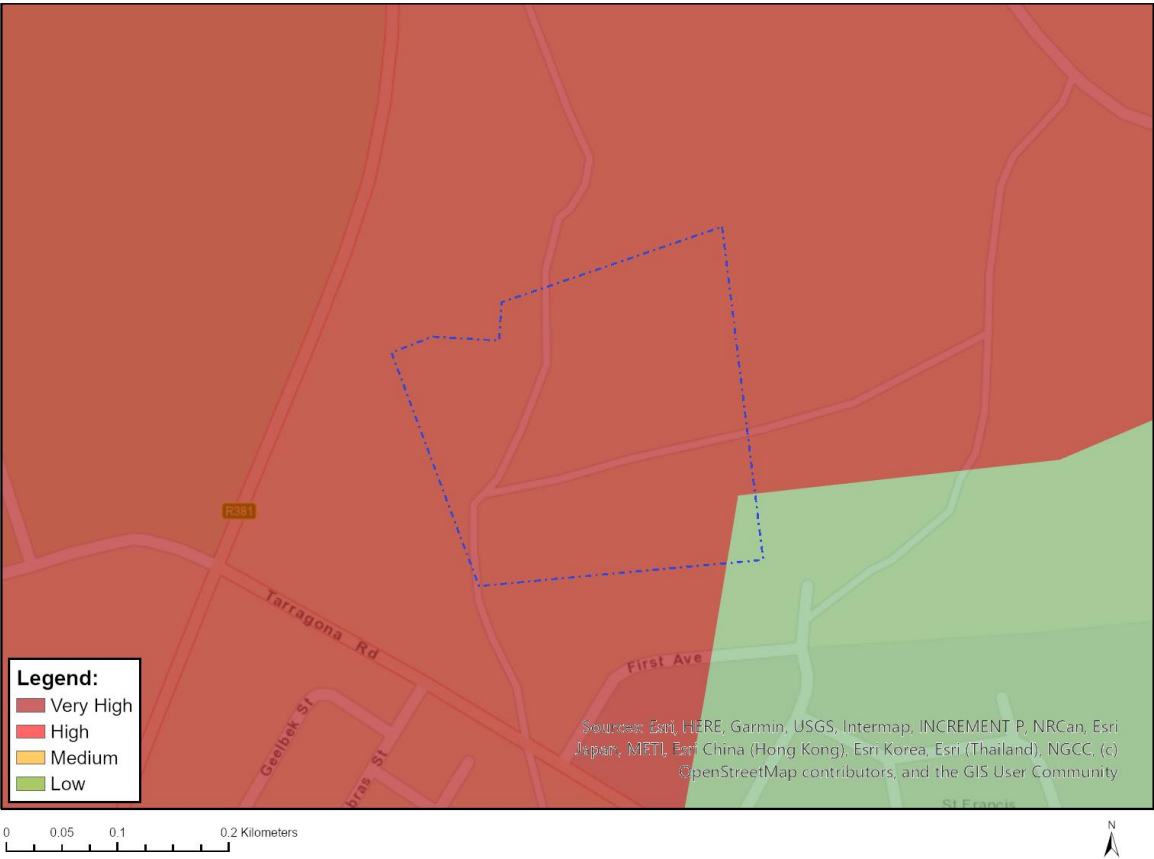
Where only a sensitive plant unique number or sensitive animal unique number is provided in the screening report and an assessment is required, the environmental assessment practitioner (EAP) or specialist is required to email SANBI at eiadatarequests@sanbi.org.za listing all sensitive species with their unique identifiers for which information is required. The name has been withheld as the species may be prone to illegal harvesting and must be protected. SANBI will release the actual species name after the details of the EAP or specialist have been documented.

Very High sensitivity	High sensitivity	Medium sensitivity	Low sensitivity
	X		

Sensitivity Features:

Sensitivity	Feature(s)
High	Aves-Circus ranivorus
High	Aves-Bradypterus sylvaticus
Medium	Aves-Neotis denhami
Medium	Aves-Eupodotis senegalensis
Medium	Aves-Stephanoaetus coronatus
Medium	Sensitive species 8
Medium	Invertebrate-Aneuryphymus montanus

MAP OF RELATIVE AQUATIC BIODIVERSITY THEME SENSITIVITY

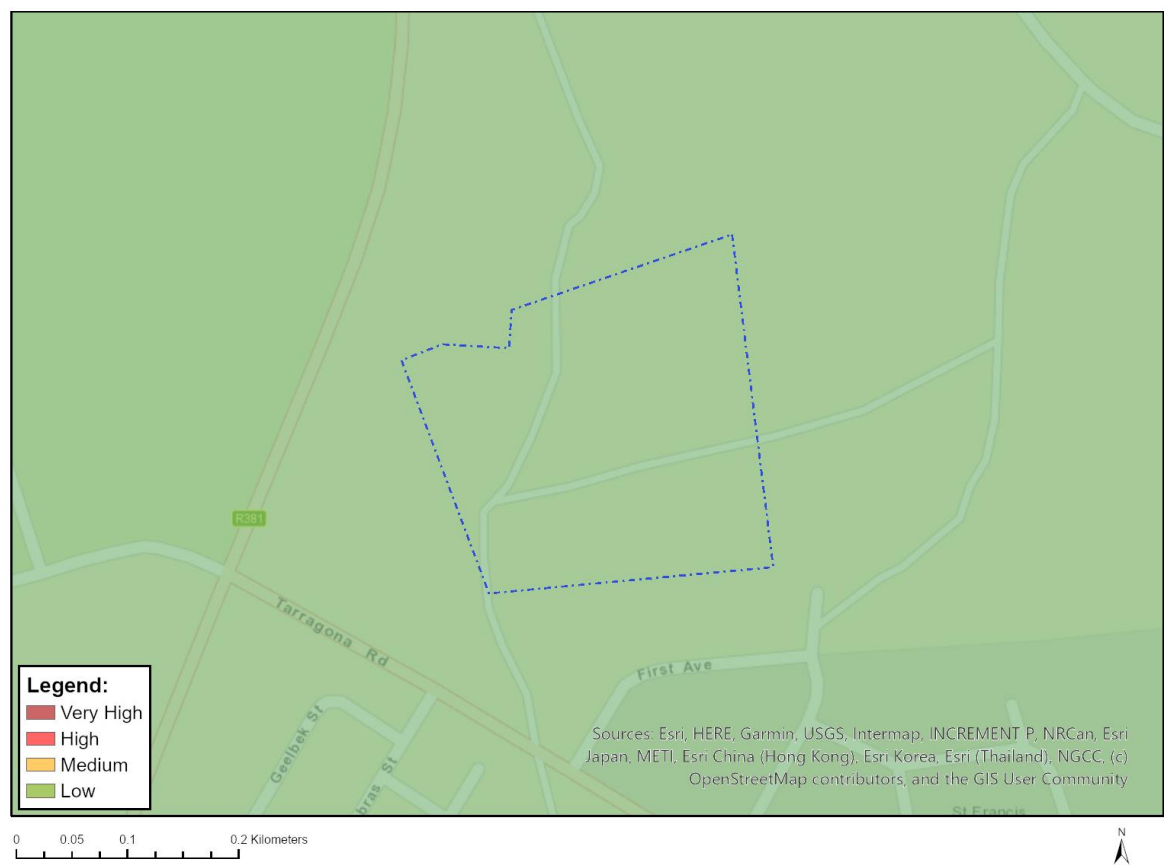


Very High sensitivity	High sensitivity	Medium sensitivity	Low sensitivity
X			

Sensitivity Features:

Sensitivity	Feature(s)
Low	Low Sensitivity
Very High	ESA 1
Very High	SWSA (sw)_Tsitsikamma

MAP OF RELATIVE ARCHAEOLOGICAL AND CULTURAL HERITAGE THEME SENSITIVITY

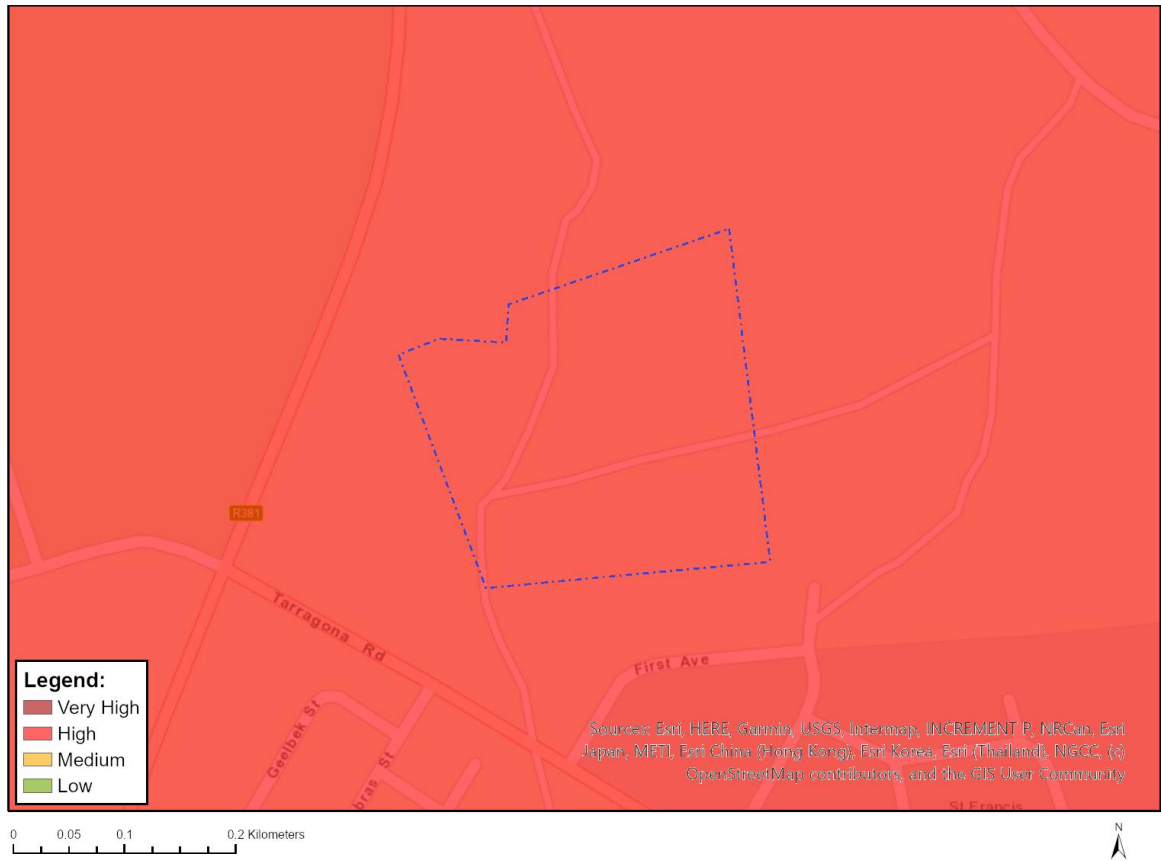


Very High sensitivity	High sensitivity	Medium sensitivity	Low sensitivity
			X

Sensitivity Features:

Sensitivity	Feature(s)
Low	Low Sensitivity

MAP OF RELATIVE CIVIL AVIATION THEME SENSITIVITY



Very High sensitivity	High sensitivity	Medium sensitivity	Low sensitivity
	X		

Sensitivity Features:

Sensitivity	Feature(s)
High	Within 8 km of other civil aviation aerodrome

MAP OF RELATIVE DEFENCE THEME SENSITIVITY

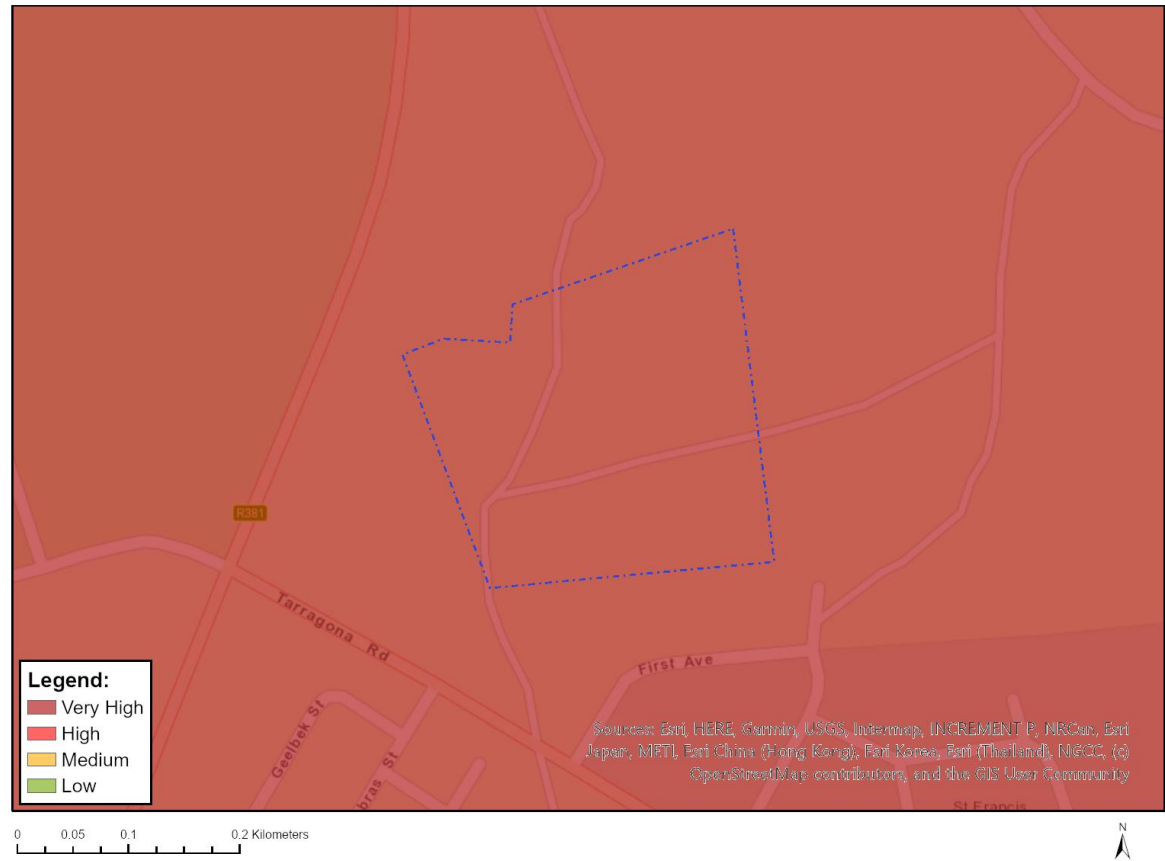


Very High sensitivity	High sensitivity	Medium sensitivity	Low sensitivity
			X

Sensitivity Features:

Sensitivity	Feature(s)
Low	Low Sensitivity

MAP OF RELATIVE PALEONTOLOGY THEME SENSITIVITY

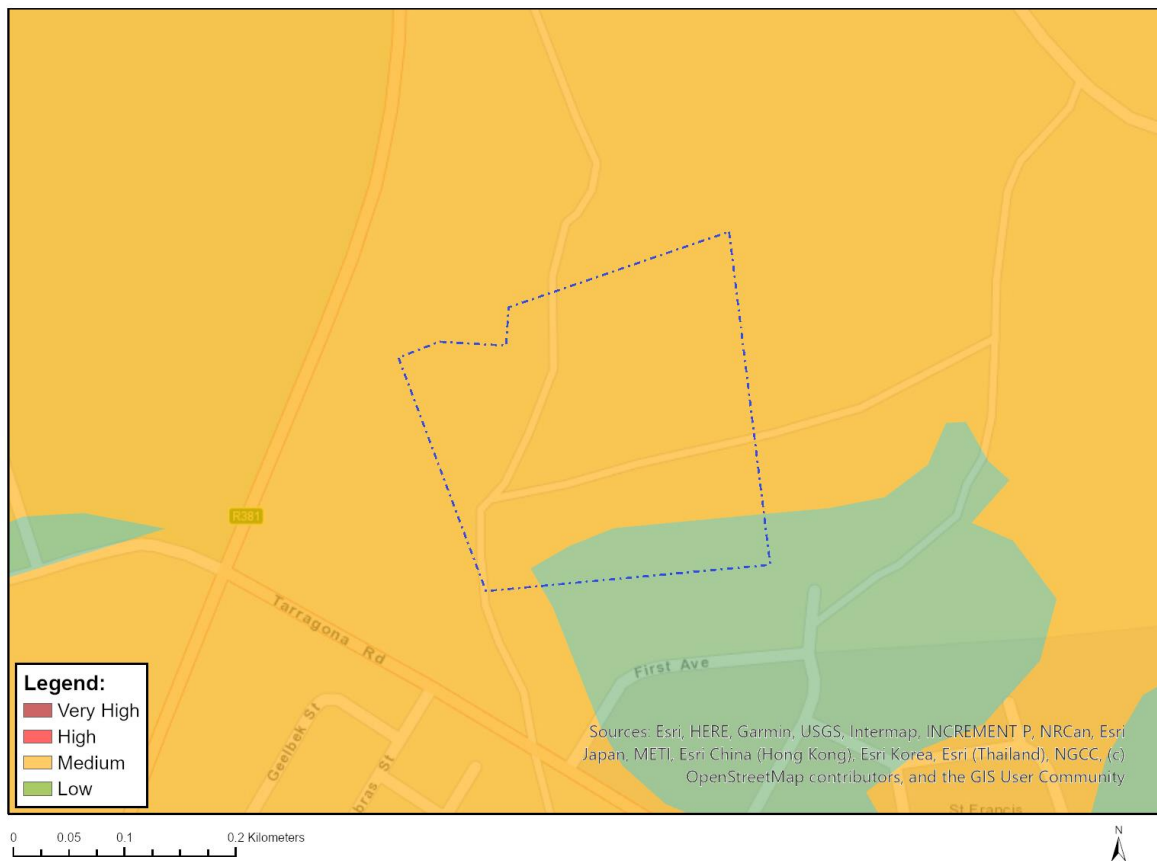


Very High sensitivity	High sensitivity	Medium sensitivity	Low sensitivity
X			

Sensitivity Features:

Sensitivity	Feature(s)
Very High	Features with a Very High paleontological sensitivity

MAP OF RELATIVE PLANT SPECIES THEME SENSITIVITY



Where only a sensitive plant unique number or sensitive animal unique number is provided in the screening report and an assessment is required, the environmental assessment practitioner (EAP) or specialist is required to email SANBI at eiadatarequests@sanbi.org.za listing all sensitive species with their unique identifiers for which information is required. The name has been withheld as the species may be prone to illegal harvesting and must be protected. SANBI will release the actual species name after the details of the EAP or specialist have been documented.

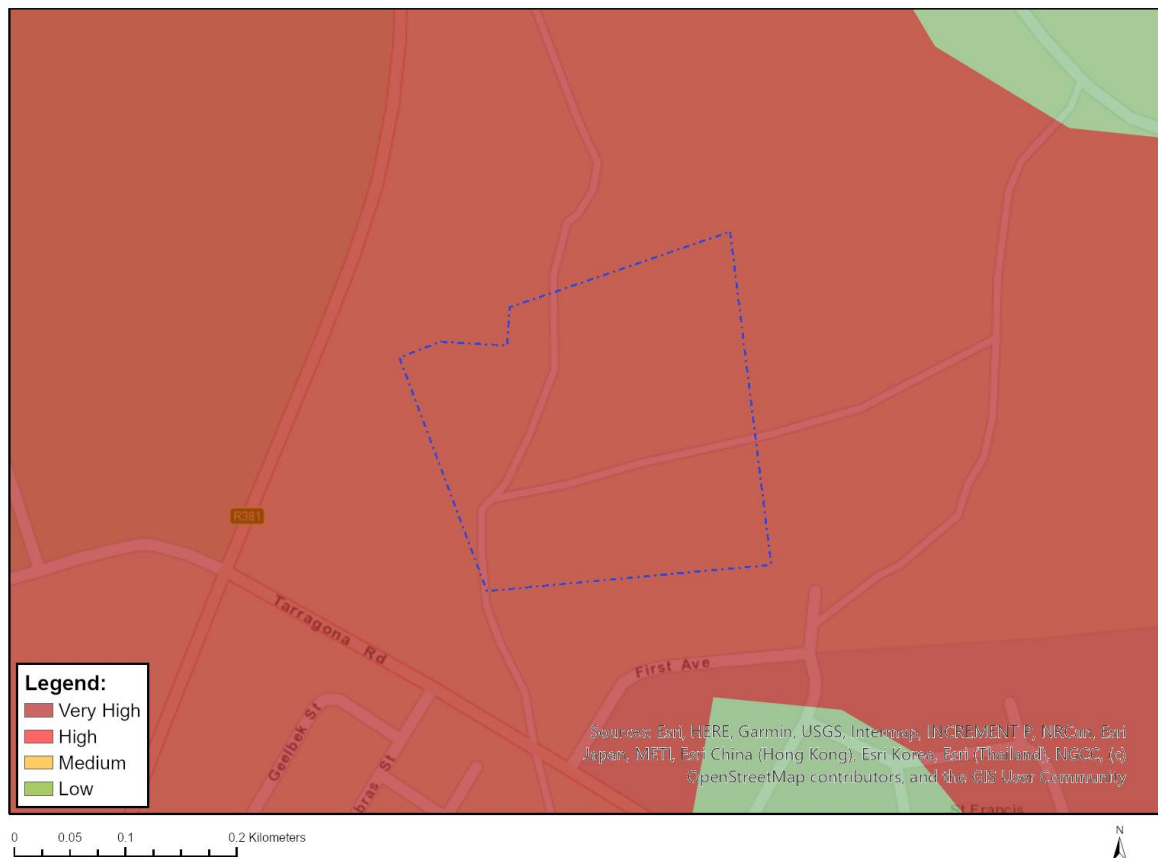
Very High sensitivity	High sensitivity	Medium sensitivity	Low sensitivity
		X	

Sensitivity Features:

Sensitivity	Feature(s)
Low	Low Sensitivity
Medium	Aspalathus recurvospina
Medium	Lebeckia gracilis
Medium	Sensitive species 308
Medium	Hyobanche robusta
Medium	Erica chloroloma
Medium	Erica glandulosa subsp. fourcadei
Medium	Sensitive species 588
Medium	Sensitive species 657
Medium	Centella tridentata var. hermanniifolia
Medium	Rapanea gilliana
Medium	Sensitive species 1192
Medium	Sensitive species 1032

Medium	<i>Syncarpha sordescens</i>
Medium	Sensitive species 78
Medium	<i>Agathosma stenopetala</i>
Medium	<i>Cotyledon adscendens</i>
Medium	<i>Capeochloa cincta</i> subsp. <i>sericea</i>
Medium	Sensitive species 448
Medium	<i>Erica glumiflora</i>

MAP OF RELATIVE TERRESTRIAL BIODIVERSITY THEME SENSITIVITY



Very High sensitivity	High sensitivity	Medium sensitivity	Low sensitivity
X			

Sensitivity Features:

Sensitivity	Feature(s)
Very High	CBA1
Very High	CBA2
Very High	SWSA (sw)_Tsitsikamma