

**SCREENING REPORT FOR AN ENVIRONMENTAL AUTHORIZATION AS
REQUIRED BY THE 2014 EIA REGULATIONS – PROPOSED SITE
ENVIRONMENTAL SENSITIVITY**

EIA Reference number: TBC

Project name: Construction of a Single Residential Dwelling

Project title: Erf 1216 Sea Vista, Kouga Municipality, Eastern Cape

Date screening report generated: 15/11/2024 11:25:46

Applicant: Birdman Investments (Pty) Limited

Compiler: Eco Route Environmental Consultancy

Compiler signature:



Application Category: Infrastructure | Localised infrastructure | Infrastructure in the
Sea_Estuary_Littoral Active Zone_Development Setback_100M Inland or coastal public property



Table of Contents

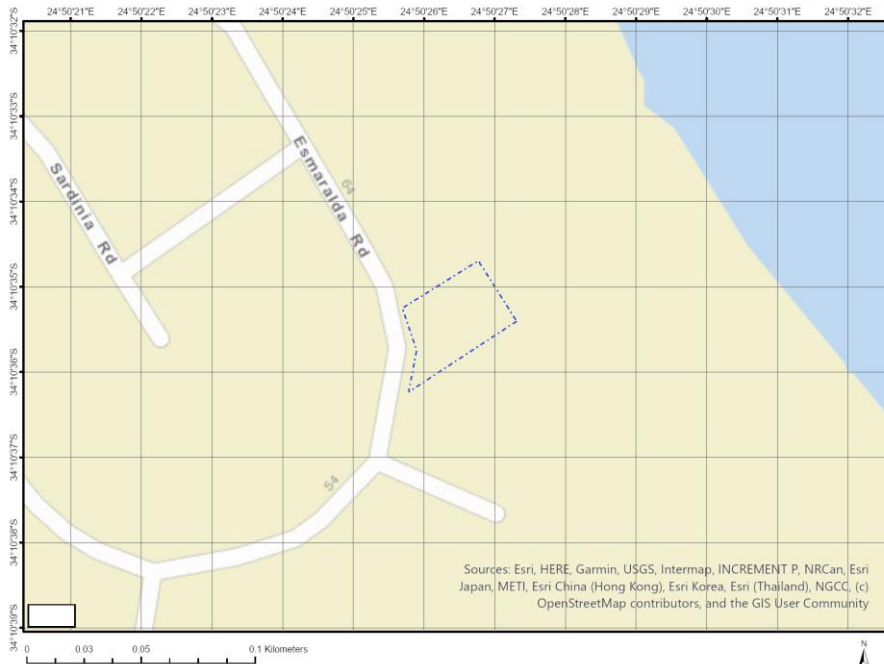
- Proposed Project Location 3
 - Orientation map 1: General location 3
- Map of proposed site and relevant area(s) 4
 - Cadastral details of the proposed site 4
 - Wind and Solar developments with an approved Environmental Authorisation or applications under consideration within 30 km of the proposed area 4
 - Environmental Management Frameworks relevant to the application 5
- Environmental screening results and assessment outcomes 5
 - Relevant development incentives, restrictions, exclusions or prohibitions 5
 - Proposed Development Area Environmental Sensitivity 5
 - Specialist assessments identified 6
- Results of the environmental sensitivity of the proposed area 7
 - MAP OF RELATIVE ANIMAL SPECIES THEME SENSITIVITY 7
 - MAP OF RELATIVE AQUATIC BIODIVERSITY THEME SENSITIVITY 8
 - MAP OF RELATIVE ARCHAEOLOGICAL AND CULTURAL HERITAGE THEME SENSITIVITY 9
 - MAP OF RELATIVE CIVIL AVIATION THEME SENSITIVITY 10
 - MAP OF RELATIVE DEFENCE THEME SENSITIVITY 11
 - MAP OF RELATIVE PALEONTOLOGY THEME SENSITIVITY 12
 - MAP OF RELATIVE PLANT SPECIES THEME SENSITIVITY 13
 - MAP OF RELATIVE TERRESTRIAL BIODIVERSITY THEME SENSITIVITY 14

Proposed Project Location

Orientation map 1: General location



Map of proposed site and relevant area(s)



Cadastral details of the proposed site

Property details:

| No | Farm Name | Farm/ Erf No | Portion | Latitude | Longitude | Property Type |
|----|-----------|--------------|---------|--------------|--------------|---------------|
| 1 | SEA VISTA | 1216 | 0 | 34°10'35.39S | 24°50'26.43E | Erven |

Development footprint¹ vertices:
No development footprint(s) specified.

Wind and Solar developments with an approved Environmental Authorisation or applications under consideration within 30 km of the proposed area

| No | EIA Reference No | Classification | Status of application | Distance from proposed area (km) |
|----|---------------------|----------------|-----------------------|----------------------------------|
| 1 | 12/12/20/1718 | Wind | Approved | 15.9 |
| 2 | 12/12/20/1756/1 | Wind | Approved | 8.9 |
| 3 | 12/12/20/2289/AM2 | Wind | Approved | 12.2 |
| 4 | 12/12/20/1861 | Wind | Approved | 28.6 |
| 5 | 12/12/20/1585/AM7 | Wind | Approved | 18.9 |
| 6 | 12/12/20/1756/1/AM4 | Wind | Approved | 8.9 |
| 7 | 12/12/20/1861/AM1 | Wind | Approved | 28.6 |

¹ "development footprint", means the area within the site on which the development will take place and includes all ancillary developments for example roads, power lines, boundary walls, paving etc. which require vegetation clearance or which will be disturbed and for which the application has been submitted.

| | | | | |
|----|-------------------------|----------|----------|------|
| 8 | 12/12/20/1585/A5 | Wind | Approved | 18.9 |
| 9 | 14/12/16/3/3/2/1102/AM1 | Wind | Approved | 30 |
| 10 | 12/12/20/1585 | Wind | Approved | 18.9 |
| 11 | 12/12/20/1752 | Wind | Approved | 28.9 |
| 12 | 12/12/20/1585/AM6 | Wind | Approved | 18.9 |
| 13 | 14/12/16/3/3/1/2566 | Solar PV | Approved | 24.8 |
| 14 | 12/12/20/1756 | Wind | Approved | 5 |
| 15 | 14/12/16/3/3/2/1104 | Wind | Approved | 19.7 |
| 16 | 12/12/20/2209 | Wind | Approved | 30 |
| 17 | 12/12/20/1756/2 | Wind | Approved | 29.3 |
| 18 | 14/12/16/3/3/2/1104/AM1 | Wind | Approved | 19.7 |

Environmental Management Frameworks relevant to the application

No intersections with EMF areas found.

Environmental screening results and assessment outcomes

The following sections contain a summary of any development incentives, restrictions, exclusions or prohibitions that apply to the proposed development site as well as the most environmental sensitive features on the site based on the site sensitivity screening results for the application classification that was selected. The application classification selected for this report is:

Infrastructure|Localised infrastructure|Infrastructure in the Sea_Estuary_Littoral Active Zone_Development Setback_100M Inland or coastal public property.

Relevant development incentives, restrictions, exclusions or prohibitions

The following development incentives, restrictions, exclusions or prohibitions and their implications that apply to this site are indicated below.

| Incentive, restriction or prohibition | Implication |
|---------------------------------------|---|
| South African Conservation Areas | https://screening.environment.gov.za/ScreeningDownloads/DevelopmentZones/SACAD_OR_2024_Q1_Metadata.pdf |

Proposed Development Area Environmental Sensitivity

The following summary of the development site environmental sensitivities is identified. Only the highest environmental sensitivity is indicated. The footprint environmental sensitivities for the proposed development footprint as identified, are indicative only and must be verified on site by a suitably qualified person before the specialist assessments identified below can be confirmed.

| Theme | Very High sensitivity | High sensitivity | Medium sensitivity | Low sensitivity |
|--|-----------------------|------------------|--------------------|-----------------|
| Animal Species Theme | | | X | |
| Aquatic Biodiversity Theme | | | | X |
| Archaeological and Cultural Heritage Theme | | | | X |
| Civil Aviation Theme | | X | | |

| | | | | |
|--------------------------------|--|--|---|---|
| Defence Theme | | | | X |
| Paleontology Theme | | | | X |
| Plant Species Theme | | | X | |
| Terrestrial Biodiversity Theme | | | | X |

Specialist assessments identified

Based on the selected classification, and the known impacts associated with the proposed development, the following list of specialist assessments have been identified for inclusion in the assessment report. It is the responsibility of the EAP to confirm this list and to motivate in the assessment report, the reason for not including any of the identified specialist study including the provision of photographic evidence of the site situation.

| No | Specialist assessment | Assessment Protocol |
|----|--|---|
| 1 | Landscape/Visual Impact Assessment | https://screening.environment.gov.za/ScreeningDownloads/AssessmentProtocols/Gazetted_General_Requirement_Assessment_Protocols.pdf |
| 2 | Archaeological and Cultural Heritage Impact Assessment | https://screening.environment.gov.za/ScreeningDownloads/AssessmentProtocols/Gazetted_General_Requirement_Assessment_Protocols.pdf |
| 3 | Palaeontology Impact Assessment | https://screening.environment.gov.za/ScreeningDownloads/AssessmentProtocols/Gazetted_General_Requirement_Assessment_Protocols.pdf |
| 4 | Terrestrial Biodiversity Impact Assessment | https://screening.environment.gov.za/ScreeningDownloads/AssessmentProtocols/Gazetted_Terrestrial_Biodiversity_Assessment_Protocols.pdf |
| 5 | Aquatic Biodiversity Impact Assessment | https://screening.environment.gov.za/ScreeningDownloads/AssessmentProtocols/Gazetted_Aquatic_Biodiversity_Assessment_Protocols.pdf |
| 6 | Marine Impact Assessment | https://screening.environment.gov.za/ScreeningDownloads/AssessmentProtocols/Gazetted_General_Requirement_Assessment_Protocols.pdf |
| 7 | Avian Impact Assessment | https://screening.environment.gov.za/ScreeningDownloads/AssessmentProtocols/Gazetted_Avifauna_Assessment_Protocols.pdf |
| 8 | Geotechnical Assessment | https://screening.environment.gov.za/ScreeningDownloads/AssessmentProtocols/Gazetted_General_Requirement_Assessment_Protocols.pdf |
| 9 | Socio-Economic Assessment | https://screening.environment.gov.za/ScreeningDownloads/AssessmentProtocols/Gazetted_General_Requirement_Assessment_Protocols.pdf |
| 10 | Plant Species Assessment | https://screening.environment.gov.za/ScreeningDownloads/AssessmentProtocols/Gazetted_Plant_Species_Assessment_Protocols.pdf |
| 11 | Animal Species Assessment | https://screening.environment.gov.za/ScreeningDownloads/AssessmentProtocols/Gazetted_Animal_Species_Assessment_Protocols.pdf |

Results of the environmental sensitivity of the proposed area.

The following section represents the results of the screening for environmental sensitivity of the proposed site for relevant environmental themes associated with the project classification. It is the duty of the EAP to ensure that the environmental themes provided by the screening tool are comprehensive and complete for the project. Refer to the disclaimer.

MAP OF RELATIVE ANIMAL SPECIES THEME SENSITIVITY

Unable to obtain map image.

Where only a sensitive plant unique number or sensitive animal unique number is provided in the screening report and an assessment is required, the environmental assessment practitioner (EAP) or specialist is required to email SANBI at eiadatarequests@sanbi.org.za listing all sensitive species with their unique identifiers for which information is required. The name has been withheld as the species may be prone to illegal harvesting and must be protected. SANBI will release the actual species name after the details of the EAP or specialist have been documented.

| Very High sensitivity | High sensitivity | Medium sensitivity | Low sensitivity |
|-----------------------|------------------|--------------------|-----------------|
| | | X | |

Sensitivity Features:

| Sensitivity | Feature(s) |
|-------------|------------------------------------|
| Medium | Sensitive species 8 |
| Medium | Invertebrate-Aneuryphymus montanus |

MAP OF RELATIVE AQUATIC BIODIVERSITY THEME SENSITIVITY



| Very High sensitivity | High sensitivity | Medium sensitivity | Low sensitivity |
|-----------------------|------------------|--------------------|-----------------|
| | | | X |

Sensitivity Features:

| Sensitivity | Feature(s) |
|-------------|-----------------|
| Low | Low sensitivity |

MAP OF RELATIVE ARCHAEOLOGICAL AND CULTURAL HERITAGE THEME SENSITIVITY



| Very High sensitivity | High sensitivity | Medium sensitivity | Low sensitivity |
|-----------------------|------------------|--------------------|-----------------|
| | | | X |

Sensitivity Features:

| Sensitivity | Feature(s) |
|-------------|-----------------|
| Low | Low sensitivity |

MAP OF RELATIVE CIVIL AVIATION THEME SENSITIVITY

Unable to obtain map image.

| Very High sensitivity | High sensitivity | Medium sensitivity | Low sensitivity |
|-----------------------|------------------|--------------------|-----------------|
| | X | | |

Sensitivity Features:

| Sensitivity | Feature(s) |
|-------------|---|
| High | Within 8 km of other civil aviation aerodrome |

MAP OF RELATIVE DEFENCE THEME SENSITIVITY

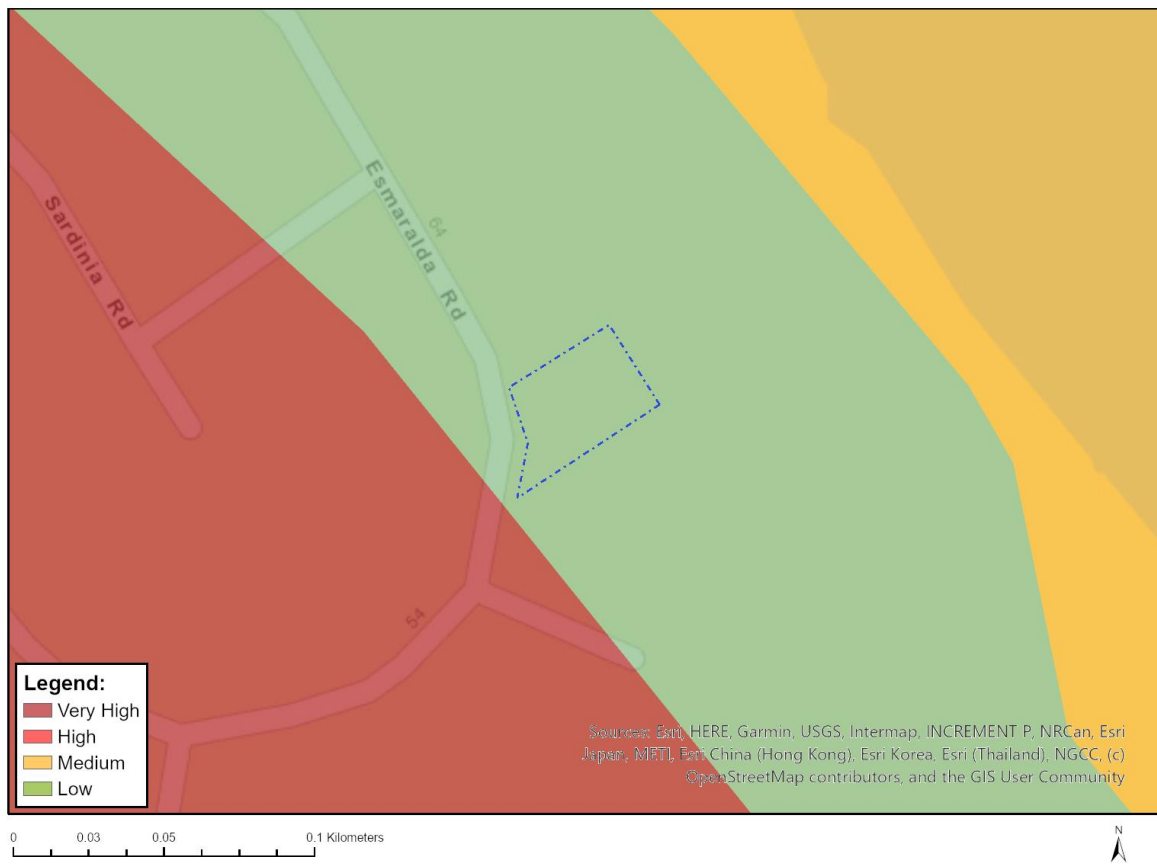


| Very High sensitivity | High sensitivity | Medium sensitivity | Low sensitivity |
|-----------------------|------------------|--------------------|-----------------|
| | | | X |

Sensitivity Features:

| Sensitivity | Feature(s) |
|-------------|-----------------|
| Low | Low Sensitivity |

MAP OF RELATIVE PALEONTOLOGY THEME SENSITIVITY



| Very High sensitivity | High sensitivity | Medium sensitivity | Low sensitivity |
|-----------------------|------------------|--------------------|-----------------|
| | | | X |

Sensitivity Features:

| Sensitivity | Feature(s) |
|-------------|---|
| Low | Features with a Low paleontological sensitivity |

MAP OF RELATIVE PLANT SPECIES THEME SENSITIVITY



Where only a sensitive plant unique number or sensitive animal unique number is provided in the screening report and an assessment is required, the environmental assessment practitioner (EAP) or specialist is required to email SANBI at eiadatarequests@sanbi.org.za listing all sensitive species with their unique identifiers for which information is required. The name has been withheld as the species may be prone to illegal harvesting and must be protected. SANBI will release the actual species name after the details of the EAP or specialist have been documented.

| Very High sensitivity | High sensitivity | Medium sensitivity | Low sensitivity |
|-----------------------|------------------|--------------------|-----------------|
| | | X | |

Sensitivity Features:

| Sensitivity | Feature(s) |
|-------------|---|
| Low | Low Sensitivity |
| Medium | Aspalathus recurvospina |
| Medium | Lebeckia gracilis |
| Medium | Sensitive species 308 |
| Medium | Hyobanche robusta |
| Medium | Erica chloroloma |
| Medium | Erica glandulosa subsp. fourcadei |
| Medium | Sensitive species 588 |
| Medium | Sensitive species 657 |
| Medium | Centella tridentata var. hermanniifolia |
| Medium | Rapanea gilliana |
| Medium | Sensitive species 1192 |
| Medium | Sensitive species 1032 |

| | |
|--------|----------------------------------|
| Medium | Syncarpha sordescens |
| Medium | Sensitive species 78 |
| Medium | Agathosma stenopetala |
| Medium | Cotyledon adscendens |
| Medium | Capeochloa cincta subsp. sericea |
| Medium | Sensitive species 448 |
| Medium | Erica glumiflora |

MAP OF RELATIVE TERRESTRIAL BIODIVERSITY THEME SENSITIVITY

Unable to obtain map image.

| Very High sensitivity | High sensitivity | Medium sensitivity | Low sensitivity |
|-----------------------|------------------|--------------------|-----------------|
| | | | X |

Sensitivity Features:

| Sensitivity | Feature(s) |
|-------------|-----------------|
| Low | Low Sensitivity |