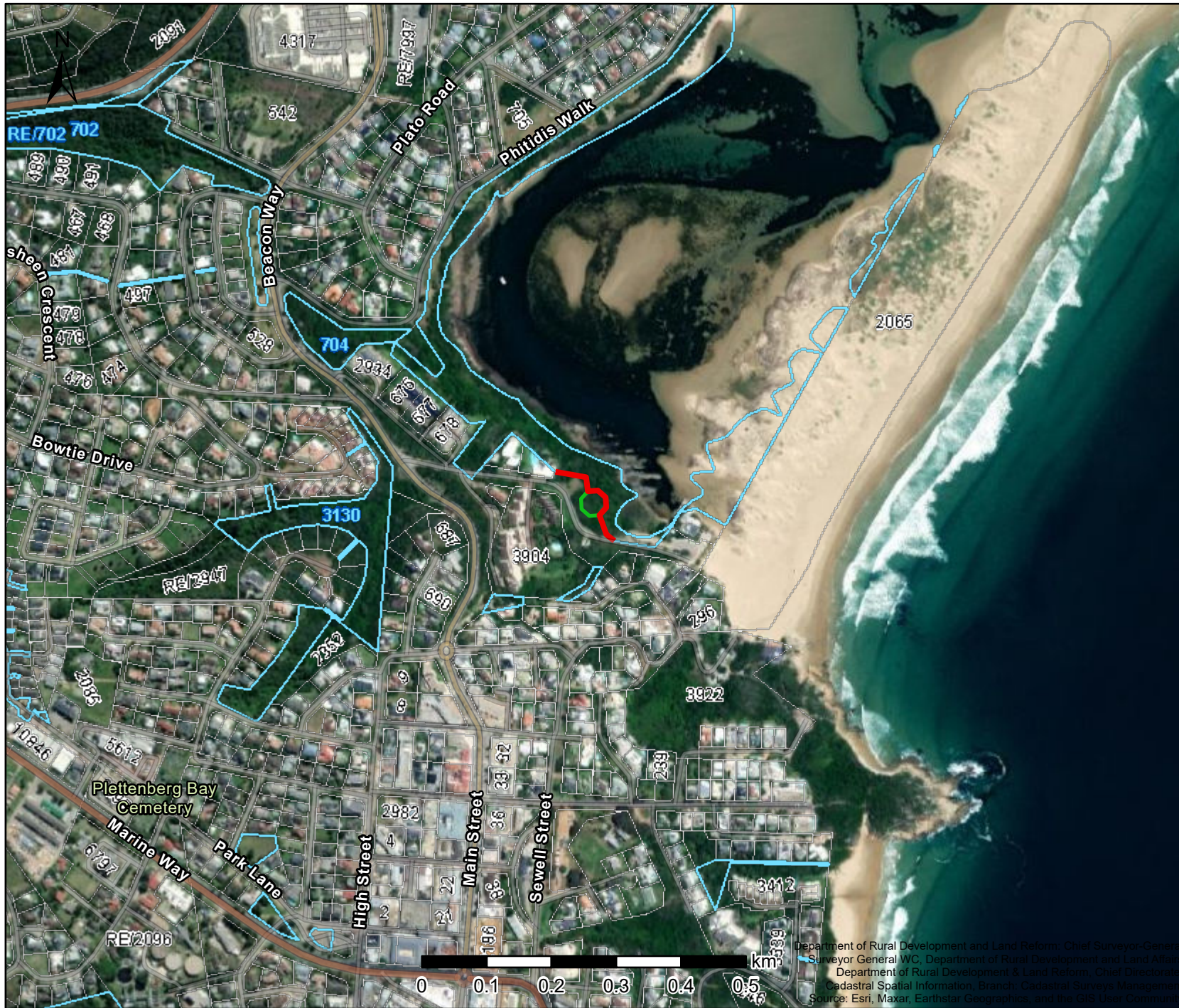




# AD HOC SETBACK LINE: Erf 699, Plettenberg Bay



## Legend

-  Public Place
-  Erf

Map Center: Lon: 23°22'27.7"E  
Lat: 34°2'59.5"S

Scale: 1:10,000

Date created: 2024/21/02



Western Cape  
Government  
FOR YOU



Department of Rural Development and Land Reform, Chief Surveyor-General  
Surveyor General WC, Department of Rural Development and Land Affairs  
Department of Rural Development & Land Reform, Chief Directorate  
Cadastral Spatial Information, Branch: Cadastral Surveys Management  
Source: Esri, Maxar, Earthstar Geographics, and the GIS User Community



# AD HOC SETBACK LINE: Erf 699, Plettenberg Bay



## Legend

-  Public Place
-  Erf

**Map Center:** Lon: 23°22'27.7"E  
Lat: 34°2'59.5"S

**Scale:** 1:2,000

**Date created:** 2024/21/02



**Western Cape  
Government**  
FOR YOU

Department of Rural Development and Land Reform - Chief Surveyor-General  
Surveyor-General WC, Department of Rural Development and Land Affairs  
Department of Rural Development and Land Reform, Chief Directorate  
Cadastral Spatial Information, Branch: Cadastral Surveys Management  
Source: Esri, Maxar, Earthstar Geographics, and the GIS User Community

# AD HOC SETBACK LINE: Erf 699, Plettenberg Bay



## Legend

-  Public Place
-  Erf

**Map Center:** Lon: 23°22'27.7"E  
Lat: 34°2'59.5"S

**Scale:** 1:940

**Date created:** 2024/21/02



**Western Cape  
Government**  
**FOR YOU**

Department of Rural Development and Land Reform: Chief Surveyor-General  
Surveyor General WC, Department of Rural Development and Land Affairs  
Department of Rural Development & Land Reform, Chief Directorate:  
Cadastral Spatial Information, Branch: Cadastral Surveys Management  
Source: Erf, Maxar, Earthstar Geographics, and the GIS User Community