

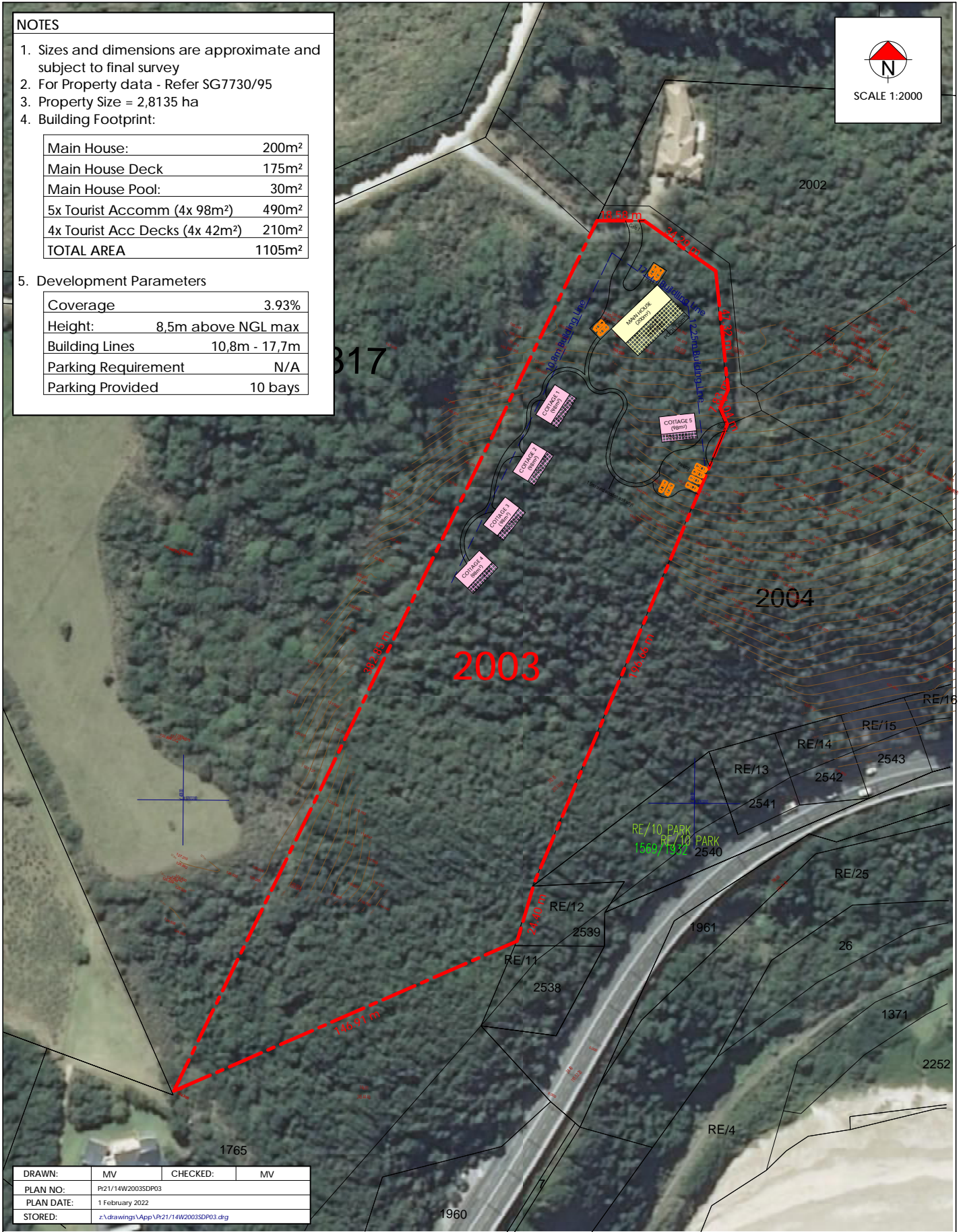
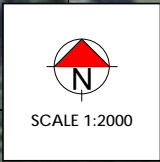
NOTES

1. Sizes and dimensions are approximate and subject to final survey
2. For Property data - Refer SG7730/95
3. Property Size = 2,8135 ha
4. Building Footprint:

Main House:	200m ²
Main House Deck	175m ²
Main House Pool:	30m ²
5x Tourist Accom (4x 98m ²)	490m ²
4x Tourist Acc Decks (4x 42m ²)	210m ²
TOTAL AREA	1105m²

5. Development Parameters

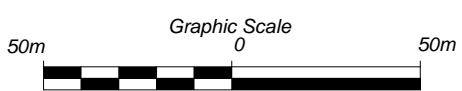
Coverage	3.93%
Height:	8.5m above NGL max
Building Lines	10,8m - 17,7m
Parking Requirement	N/A
Parking Provided	10 bays



DRAWN:	MV	CHECKED:	MV
PLAN NO:	Pr21/14W2003SDP03		
PLAN DATE:	1 February 2022		
STORED:	z:\drawings\App\Pr21/14W2003SDP03.dwg		

PLAN 3

**SITE DEVELOPMENT PLAN
(Alternative 1)**



WILDERNESS ERF 2003

21 Trotter Street, PO Box 2180
KNYSNA 6570

(044) 382 0420
086 459 2987
e-mail: marike@vreken.co.za
www.vreken.co.za