



To: **Mr Dawid Adonis**
Acting Municipal Manager
Knysna Municipality

Attention: **Pam Booth**
Per email: pbooth@knysna.gov.za

SUBJECT: **APPROVAL IN TERMS OF SECTION 50(5) OF THE NATIONAL ENVIRONMENTAL MANAGEMENT ACT (NEMA ACT NO. 57 OF 2003) FOR THE MYOLI BEACH ACCESS MAINTENANCE MANAGEMENT PLAN, WILDERNESS, GARDEN ROUTE NATIONAL PARK.**

The Knysna Municipality (KM) has compiled a Maintenance Management Plan (MMP), reviewed by Eco Route Environmental Consultancy and South African National Parks (SANParks). This MMP has been compiled to ensure equitable access to coastal public property at Myoli Beach, Sedgefield. Historical management of the public access point has been undertaken to ensure vehicular access to the beach for people with disabilities, emergency vehicles and SANParks.

The prevalent south-westerly winds periodically result in the inundation of sand over municipal infrastructure and historically this has resulted in the need to periodically remove windblown sand. Given the frequent interventions and maintenance activities that are required to maintain beach access, getting a MMP approved for each intervention on an ad hoc basis is not pragmatic. A more comprehensive MMP was prepared in order to enable KM to conduct its beach access maintenance more efficiently whilst remaining compliant with the requirements of the National Environmental Management Act 107 of 1998 (NEMA).

The MMP has the following objectives:

1. To maintain existing access that recognises the environmental sensitivities on site and structure maintenance work to avoid unnecessary disturbance and impact.
2. To minimise management commitments by using soft maintenance options.
3. To prevent the inland encroachment of the fore dune by stabilising the existing blow-out, to reduce the impacts of wind-blown sand into the Myoli Beach parking area.
4. To facilitate safe public and vehicular access.
5. To protect the existing fore dune.

The maintenance of the access route will ensure machinery necessary for the manipulation of the estuary mouth, under the management of SANParks, are able to reach the mouth.

addo elephant

agulhas

augrabies falls

bontebok

golden gate highlands

karoo

kgalagadi transfrontier

knysna lake area

kruger

mapungubwe

marakele

mountain zebra

namake

table mountain

tankwa-karoo

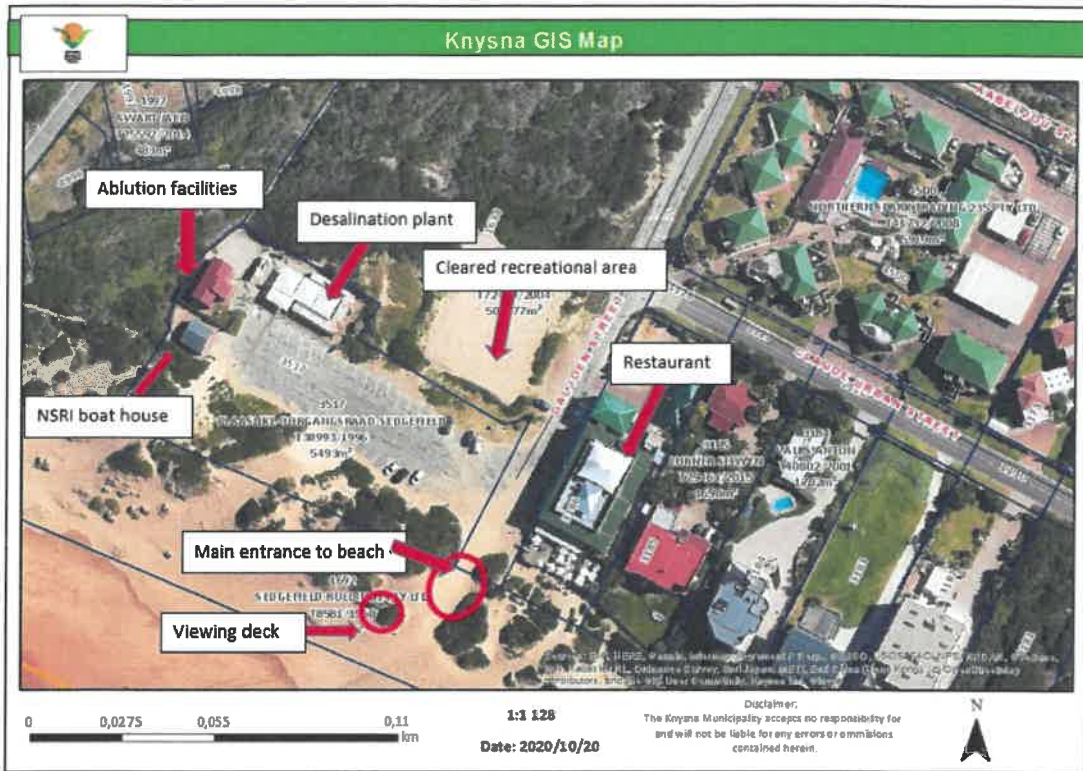
tutukamiz

u-jais/lichtersveld

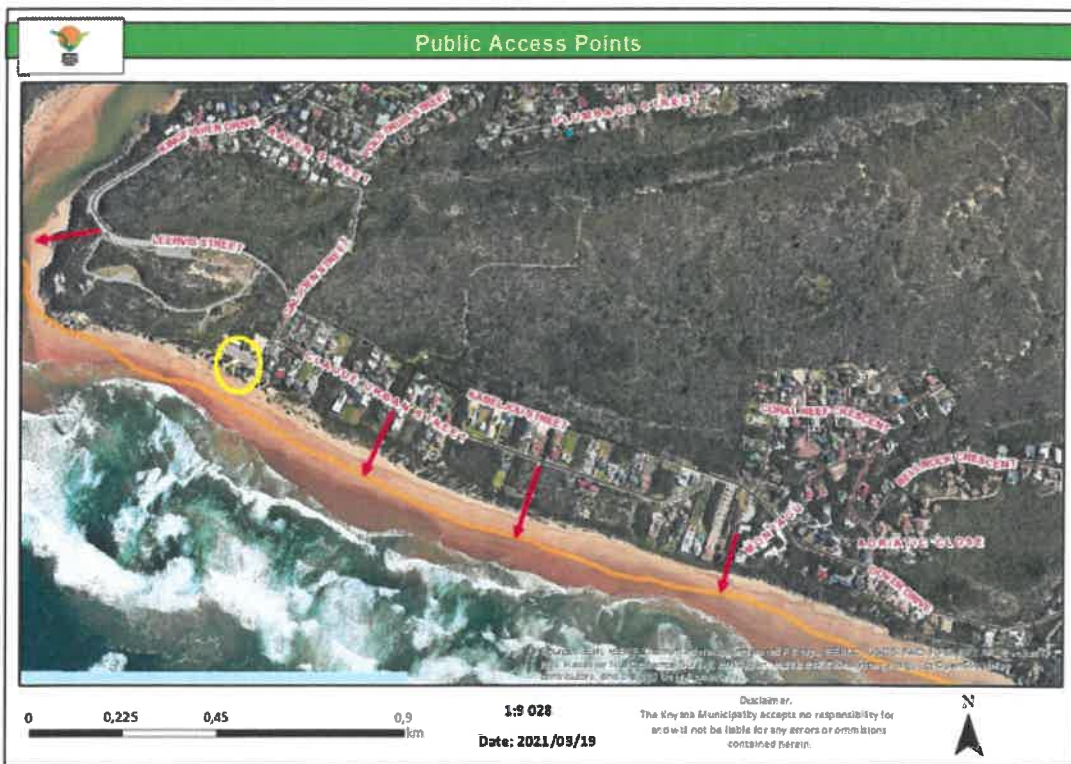
vaalbos

west coast

wilderness



Extract from KM MMP



Extract from KM MMP: Existing access points

Section 50 (5) of the National Environmental Management: Protected Areas Act (Act no. 57 of 2003, as amended) (NEM:PAA) stipulates:

No development, construction or farming may be permitted in a national park, nature reserve or world heritage site without the prior written approval of the management authority.

Furthermore, Section 19 of the NEM:PAA regulations for the proper administration of special nature reserves, national parks and world heritage sites (Government Notice R1061 in Government Gazette 28181, dated 28 October 2005) stipulates:

- (1) *No development contemplated in section 50 (5) of the Act shall be implemented—*
- (a) *in any area other than an area specifically designated for such development in a management plan; and*
 - (b) *before a management authority has indicated in writing the nature and extent of the strategic or environmental impact assessment required for the development.*
- (2) *No commercial activity or activity contemplated in section 50 of the Act, which requires an environmental impact assessment to be undertaken, either in terms of subregulation (1)(b) or under any other law, may be implemented before a management authority has approved, with or without conditions, the environmental impact assessment before it is submitted to the relevant authority for approval.*

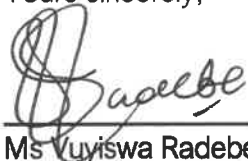
SANParks confirms that it is the management authority of the Garden Route National Park.

Beach sand from areas at Myoli Beach outside of the Park will be deposited within the boundaries of the Park by KM during beach access maintenance activities. We take note that heavy machinery will be used where necessary and that sand will be moved by hand in other cases.

SANParks supports the proposed activity of being the recipient of beach sand during maintenance activities undertaken by KM in accordance with the approved MMP (still to be released for public comment).

We hereby grant approval in terms of Section 50 (5) of the NEM:PAA (after approval of the MMP).

Yours sincerely,



Ms Vuyiswa Radebe (Thabethe)
Regional General Manager: Garden Route National Park
South African National Parks

Date: 17 September 2021

CC:	Sandra Taljaard	SANParks
	Maretha Alant	SANParks
	Karl Naudé	DFFE
	Danie Smit	DFFE
	Janet Ebersohn	Eco Route