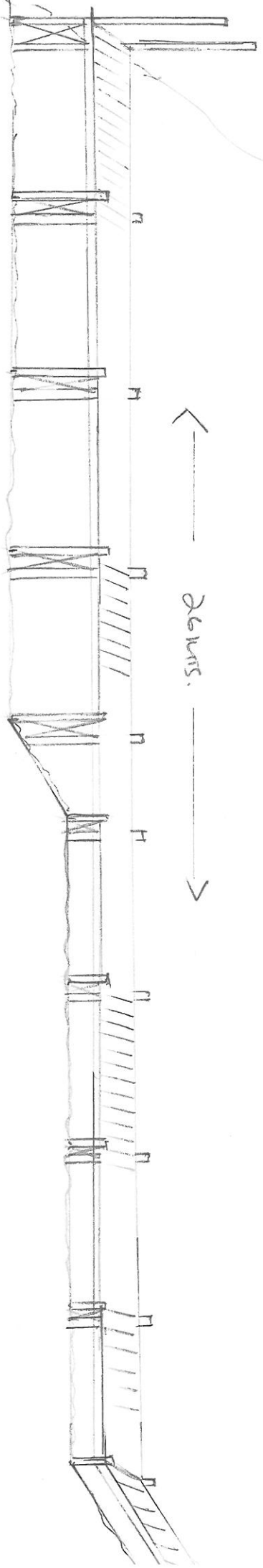


PROPOSED JETTY + BOARDWALK HONEYEASH FARM

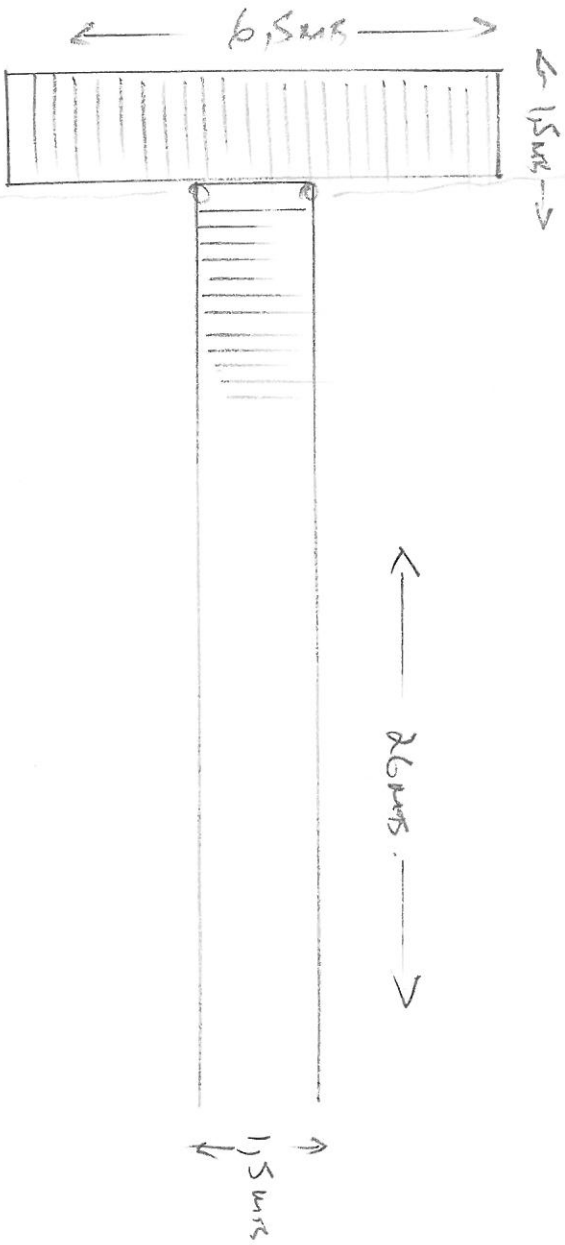
LENGTH 26MTR X WIDTH 15MTR = 39M²

RIVER



← 26MTR. →

River



floating Jetty $6.5 \times 1.5 = 9.75 \text{ m}^2$.

Boardwalk $26 \times 1.5 = 39 \text{ m}^2$

48.75 m²