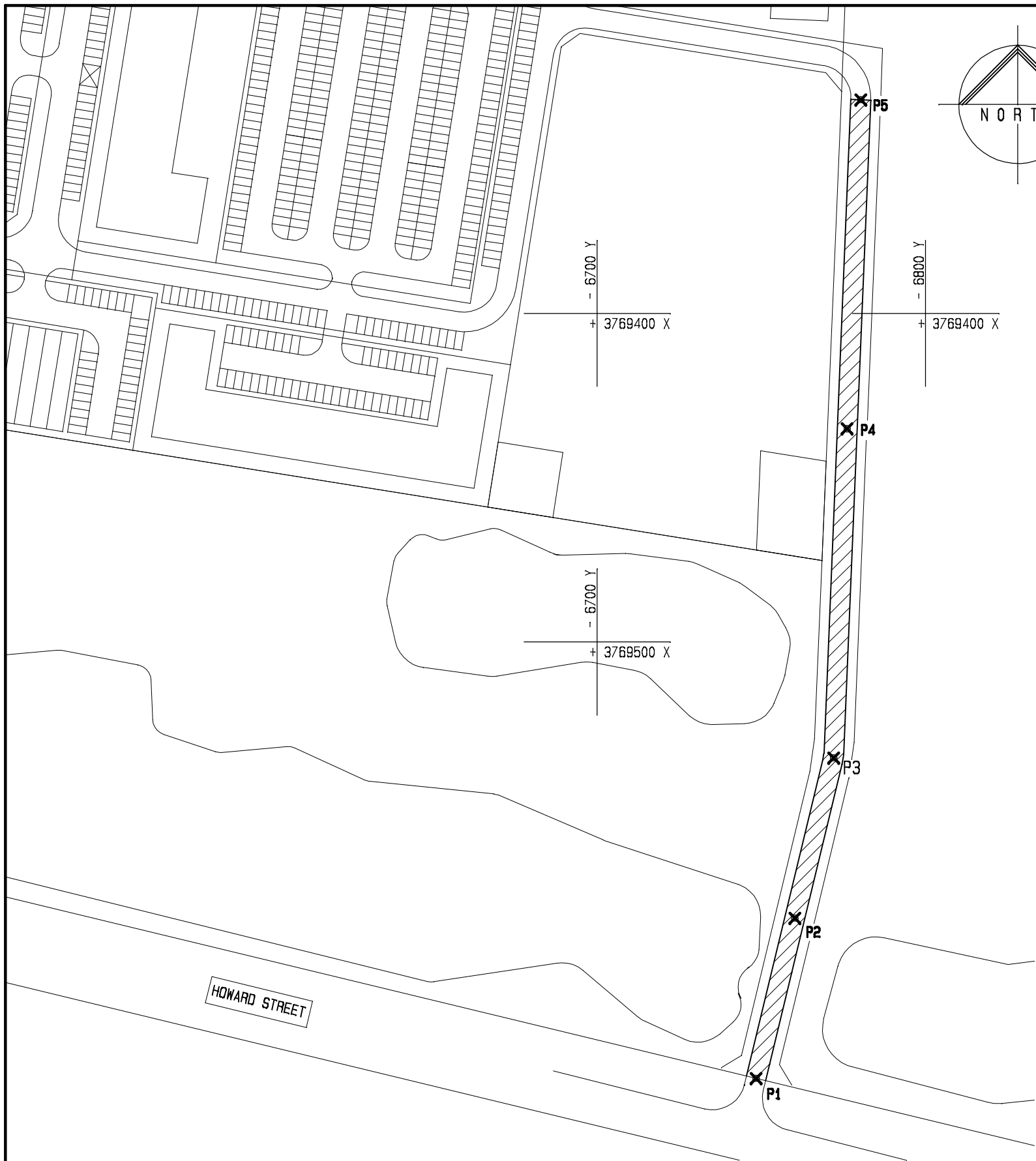
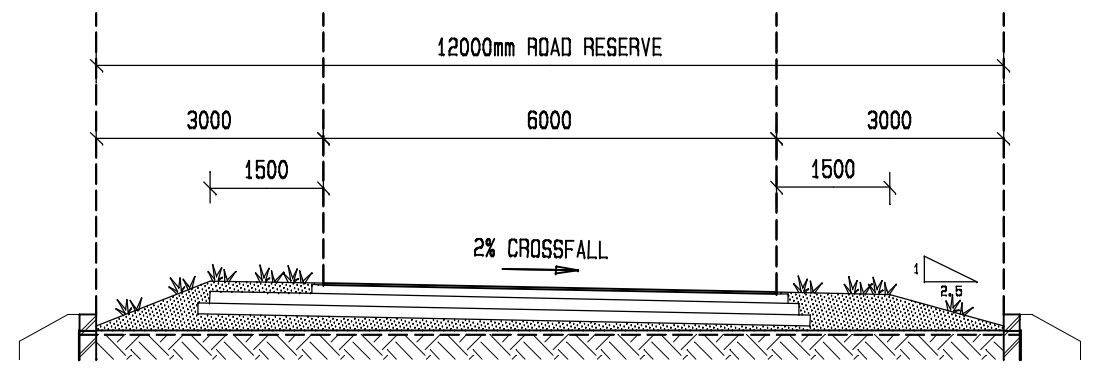
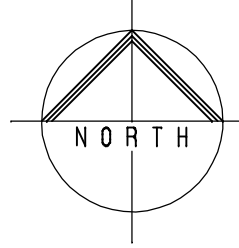


y: 2015 gn \060 \n15-60-9 wetland road co-ordinates.drw plotted 06 February 2020 at 04:47:16 PM



**LAYOUT OF WETLAND ROAD 1:1500**



**TYPICAL ROAD CROSS SECTION 1:100**

**CO-ORDINATES (WGS84/L023)**

NAME	Y CO-ORD	X CO-ORD	LATITUDE	LONGITUDE
P1	-6748,360	+3769632,810	S34°03' 13.722"	E23°04' 23.132"
P2	-6760,158	+3769584,031	S34°03' 12.139"	E23°04' 23.591"
P3	-6771,956	+3769535,251	S34°03' 10.555"	E23°04' 24.049"
P4	-6776,103	+3769435,085	S34°03' 07.304"	E23°04' 24.208"
P5	-6780,250	+3769334,919	S34°03' 04.053"	E23°04' 24.367"

REVISIONS		
PROJECT DEVELOPMENT GEORGE REX SPORT AND ADVENTURE CENTRE ERF 12403, REX DRIVE, KNYSNA		
ENGINEERS NIEUWOUTD & KIE 3 TROTTER STREET KNYSNA tel: 044-382 6882 6571 fax: 044-382 6884 e-mail : admin@nieu.co.za		
DATE 06/02/2020	REVISION 0	DRAWING NO N15/60-9